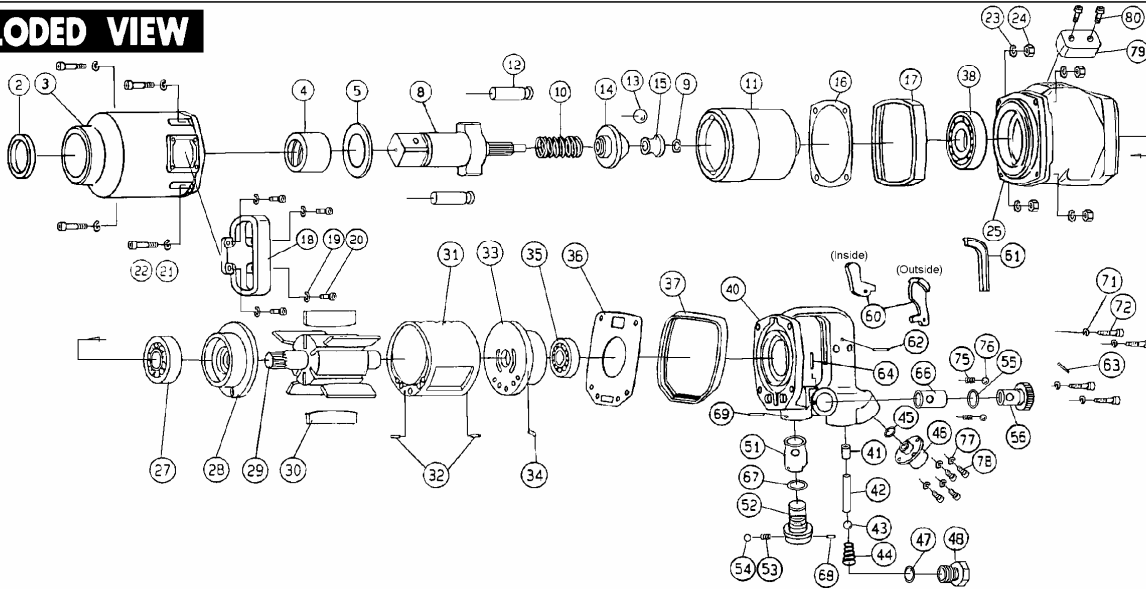


AIXIA-551SA

IMPACT WRENCH

EXPLODED VIEW



PARTS LIST

15/04/2005

◆Parts may be changed with or without notice for improvement.

PART S No.	NAME OF PARTS	PER SET	PARTS CODE	PRICE @	ORDE R	PART S No.	NAME OF PARTS	PER SET	PARTS CODE	PRICE @	ORDE R
2	Oil Seal	1	050656VB			37	Rear Protect Rubber	1	20455D51		
3A	Hammer Case Assembly (No.2 ~ No.4)		2550511			38	Ball Bearing	1	06010000		
3	Hammer Case	1	25505370			40A	Outside Lever Frame Handle Assembly (No.36, No.40 ~ No.60, No.62 ~ No.78)	140053			
4	Hammer Case Bushing	1	25515420			40A	Inside Lever Frame Handle Assembly (No.36, No.40 ~ No.78)	140063			
5	Thrust Washer	1	25505510			40	Frame Handle	1	10325D41		
8	Anvil	1	25515A20			41	Throttle Bushing	1	10325422		
9	Stop Ring	1	25515220			42	Throttle Pin	1	10325280		
10	Cam Spring	1	25505230			43	Throttle Valve	1	008050G		
11	Hammer Cage	1	25515C80			44	Throttle Spring	1	10325232		
12	Hammer Pin	2	25505C90			45	O-Ring	1	001600PR		
13	Steel Ball	1	016110SB			46	Inlet Bushing	1	10325424		
14	Cam(Driver)	1	25515080			47	O-Ring	1	002100PR		
15	Ball Guide	1	25515D80			48	Throttle Plug	1	10325D30		
16	Hammer Case Packing	1	20455350			51	Valve Bushing	1	10325421		
17	Front Protect Rubber	1	20455D50			52	Reverse Valve	1	10325E10		
18	D-Handle	1	10325C10			53	Spring	1	20191230		
19	Spring Washer (for D-Handle)	4	008050S			54	Steel Ball	1	004000S		
20	Hex.Cap Bolt (for D-Handle)	4	006180CB			55	O-Ring	1	001500PR		
21	Spring Washer	4	008050S			56	Adjust Valve	1	10325011		
22	Hex.Cap Bolt	4	008450CB			60	Outside Lever	1	10325180		
23	Spring Washer	4	008050S				Inside Lever	1	23215180		
24	Hex. Nut	4	006000N			61	Rubber (for Inside Lever)	1	23215A90		
25A	Motor Case Assembly (No.23 ~ No.35, No.37, No.38, No.79, No.80)		255152			62	Spring Pin	1	040280SP		
25	Motor Case	1	24515460			63	Needle Pin	1	040218NK		
27	Ball Bearing	1	06206Z00			64	Spring Pin	1	040320SP		
28	Front End Plate	1	25515040			66	Adjust Bushing	1	10325426		
29	Rotor	1	25515490			67	O-Ring	1	001600PR		
30	Vane	6	20455500			68	Spring Pin	1	040320SP		
31A	Cylinder Assembly (No.31, No.32)		1045523			69	Spring Pin	1	040320SP		
31	Cylinder	1	20455190			71	Spring Washer	4	008050S		
32	Spring Pin	2	040200SP			72	Hex. Cap Bolt	4	008250CB		
33A	Rear End Plate Assembly (No.33, No.34)		2400522			75	Spring	2	10325231		
33	Rear End Plate	1	24005050			76	Steel Ball	2	004000S		
34	Spring Pin	1	040080SP			77	Spring Washer	4	008050S		
35	Ball Bearing	1	06205000			78	Hex. Cap Bolt	4	005150CB		
36	Motor Case Packing	1	20455351			79	Exhaust Rubber	1	20505020		
						80	Hex. Cap Bolt	2	003120CB		