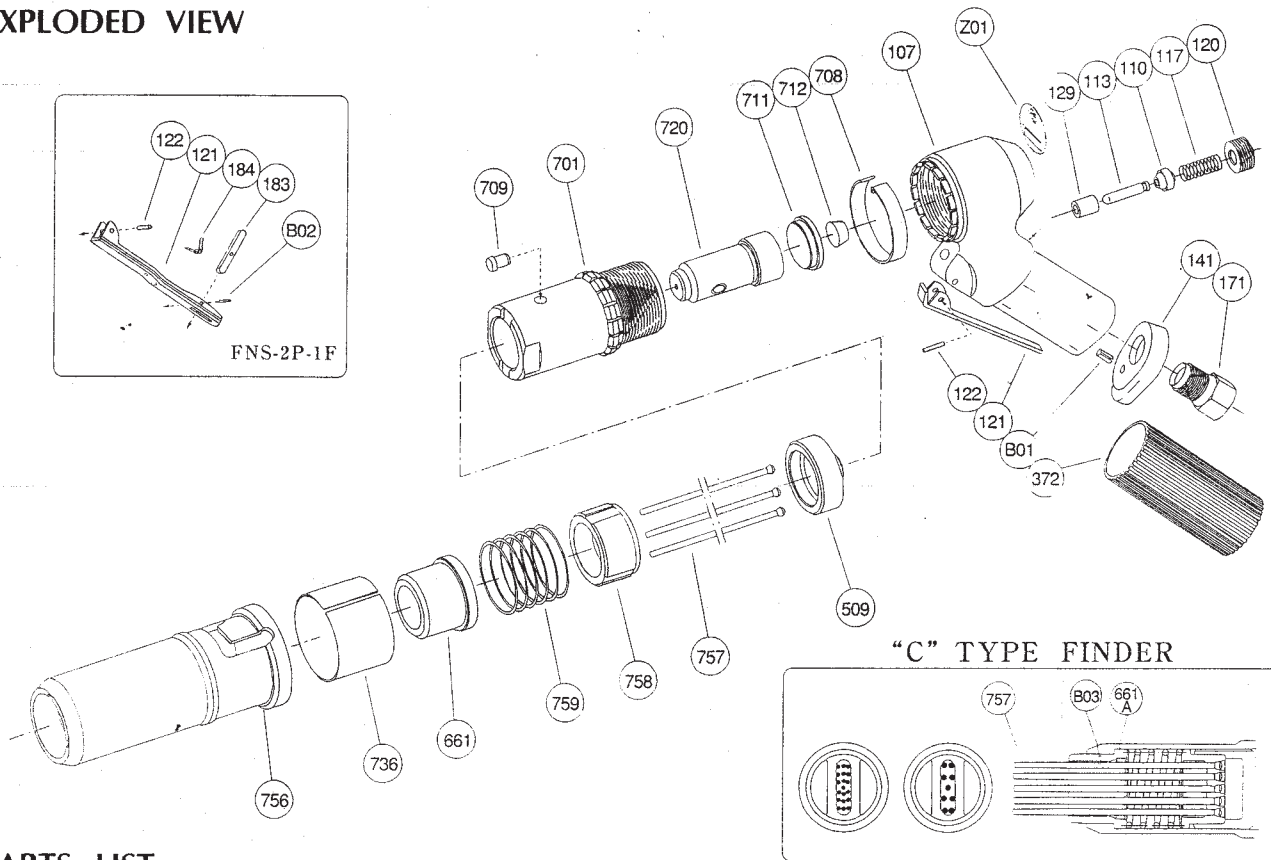


PARTS LIST MODEL: FNS-2P, -2P-1F

EXPLODED VIEW



"C" TYPE FINDER

PARTS LIST

Index No.	Parts No.	Parts Name	Qt.
FNS-2P			
CP No.	H-064002-00	Handle CP	
107	H-064002-50	Handle	1
(129)	H-014129-00	Throttle Valve Rod Bushing	1
117	H-001117-00	Throttle Valve Spring	1
120	H-064120-00	Throttle Valve Cover	1
121	H-063121-00	Throttle Valve Lever	1
122	H-001122-00	Throttle Valve Lever Pin	1
141	H-064141-00	Handle Washer	1
171	W-025171-00	Inlet Joint (PT)	1
171	W-025171-01	Inlet Joint (NPT)	1
372	H-064372-00	Plastic Cover	1
B01	SP-48	Spring Pin	1
CP No.	G-083008-00	Throttle Valve Rod CP	
110	H-001110-02	Throttle Valve	1
113	G-083113-00	Throttle Valve Rod	1
FNS-2P-1F			
CP No.	H-064002-02	Handle CP	
107	H-064002-50	Handle	1
(129)	H-014129-00	Throttle Valve Rod Bushing	1
117	H-001117-00	Throttle Valve Spring	1
120	H-064120-00	Throttle Valve Cover	1
122	H-001122-00	Throttle Valve Lever Pin	1
141	H-064141-00	Handle Washer	1
171	W-025171-00	Inlet Joint (PT)	1
171	W-025171-01	Inlet Joint (NPT)	1
372	H-064372-00	Plastic Cover	1
B01	SP-48	Spring Pin	1
CP No.	G-105008-00	Throttle Valve Rod CP	
110	H-001110-02	Throttle Valve	1
113	G-105113-00	Throttle Valve Rod	1

Index No.	Parts No.	Parts Name	Qt.
CP No.	G-144019-01	Lock Lever CP	
121	G-144121-02	Lock Lever	1
183	G-144183-02	Lock Key	1
184	G-144184-00	Lock Spring	1
B02	SP-218	Spring Pin	1
FNS-2P FNS-2P-1F			
CP No.	H-063007-00	Cylinder CP	
701	H-063701-00	Cylinder	1
709	H-063709-00	Locking Clutch Key	1
509	H-063509-00	Anvil	1
661	H-063661-00	Finder	1
708	H-014708-00	Locking Clutch	1
711	H-014711-00	Cylinder Cover	1
712	H-001712-00	Damper	1
720	H-063720-00	Piston	1
736	H-063736-00	Band	1
756	H-063756-00	Front Tube	1
757	H-063757-00	Needle (φ3)	19
757	H-063757-01	Needle (φ2)	37
758	H-063758-01	Needle Holder (φ3)	1
758	H-063758-02	Needle Holder (φ2)	1
759	H-057759-01	Return Spring	1
Z01	NP-0205	Name Plate	1
OPTION			
PART FOR "C" TYPE FINDER			
661A	H-063661-01	Finder	1
(B03)	SP-36	Spring Pin	1

□ CP No. denotes the assembled parts comprising of more than 1 pc. of parts. The related parts are shown in the thick frame.

□ #107 and 661A are supplied together with parts shown in ().

□ Specify parts number and quantity in ordering.

■ Number of Needles necessary for C Type Finder is 9 for φ3 Needle and 19 for φ2 Needle.