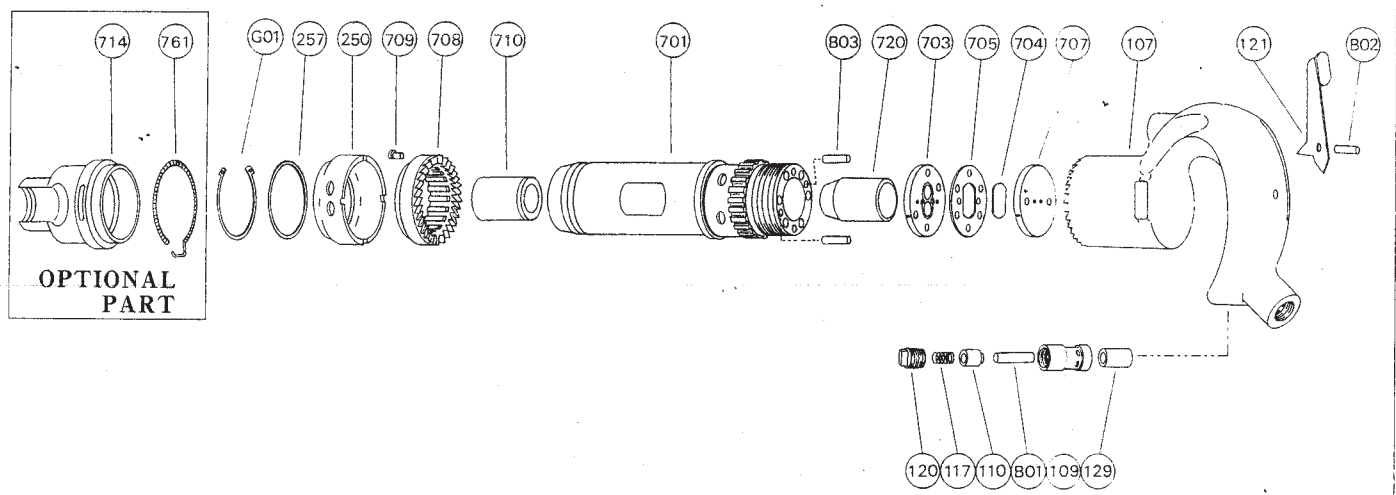


EXPLODED VIEW



FC-1Z-1, -2
FC-2Z-1, -2

PARTS LIST

| Index No. | Parts No. | | | | Parts Name | Qt. |
|----------------------|--------------------|--------------------|--------------------|--------------------|----------------------------|-----|
| | FC-1Z-1 | FC-1Z-2 | FC-2Z-1 | FC-2Z-2 | | |
| CP No. | H-047002-00 | ○ | ○ | ○ | Handle CP | |
| 107 | H-047107-01 | ○ | ○ | ○ | Handle | 1 |
| 109 | H-006109-00 | ○ | ○ | ○ | Throttle Valve Bushing | 1 |
| 110 | H-047110-00 | ○ | ○ | ○ | Throttle Valve | 1 |
| 117 | H-006117-00 | ○ | ○ | ○ | Throttle Valve Spring | 1 |
| 120 | H-006120-00 | ○ | ○ | ○ | Throttle Valve Cover | 1 |
| 121 | H-006121-A | ○ | ○ | ○ | Throttle Valve Lever | 1 |
| 129 | H-006129-00 | ○ | ○ | ○ | Throttle Valve Rod Bushing | 1 |
| B01 | NR-650 | ○ | ○ | ○ | Needle Roller | 1 |
| B02 | NR-420 | ○ | ○ | ○ | Needle Roller | 1 |
| CP No. | H-047007-01 | H-047007-02 | H-048007-01 | H-048007-02 | Cylinder CP | |
| 701 | H-047701-00 | ○ | H-048701-00 | ○ | Cylinder | 1 |
| 710 | H-006710-H | H-006710-00 | H-006710-H | H-006710-00 | Chisel Bushing | 1 |
| 250 | H-047250-03 | ○ | ○ | ○ | Exhaust Cover | 1 |
| 257 | H-047257-00 | ○ | ○ | ○ | Washer | 1 |
| 703 | H-006703-00 | ○ | ○ | ○ | Valve Sheet | 1 |
| 704 | H-006704-00 | ○ | ○ | ○ | Valve | 1 |
| 705 | H-006705-00 | ○ | ○ | ○ | Valve Case | 1 |
| 707 | H-006707-00 | ○ | ○ | ○ | Valve Cover | 1 |
| 708 | H-047708-00 | ○ | ○ | ○ | Locking Clutch | 1 |
| 709 | H-047709-00 | ○ | ○ | ○ | Locking Clutch Key | 1 |
| 720 | H-006720-00 | ○ | H-007720-00 | ○ | Piston | 1 |
| B03 | P-523 | ○ | ○ | ○ | Pin | 2 |
| G01 | SR-S52 | ○ | ○ | ○ | Snap Ring | 1 |
| OPTIONAL PART | | | | | | |
| 714 | H-047714-01 | ○ | ○ | ○ | Chisel Holder | 1 |
| 761 | H-047761 | ○ | ○ | ○ | Retainer Spring | 1 |

CP No. denotes the assembled parts comprising of more than 1 pc. of parts. Specify parts number and quantity in ordering.
 The related parts are shown in the thick frame. ● Optional Accessory : HN-304001 Hose Nipple 1.
 ○ mark in the parts No. space denotes the same parts as used in the left-side model.

MANUFACTURER:
FUJI AIR TOOLS CO., LTD.

1-14, Kamiji 2-chome, Higashinari-ku, Osaka 537, Japan
Tel. : (06) 972-2335 (Overseas Dept) Fax : (06) 972-2250