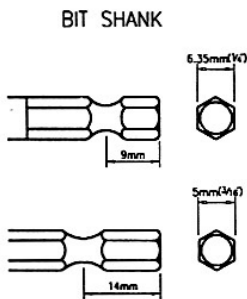
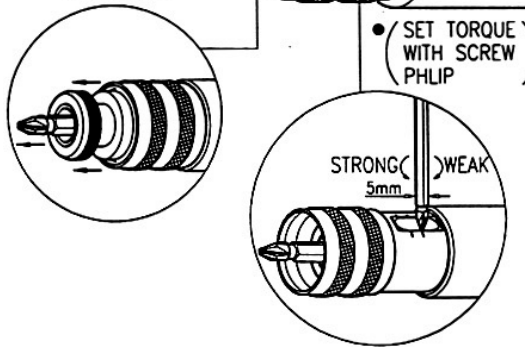
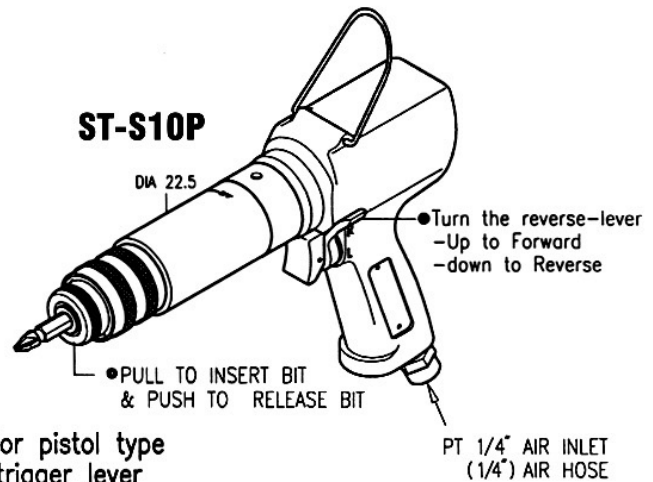
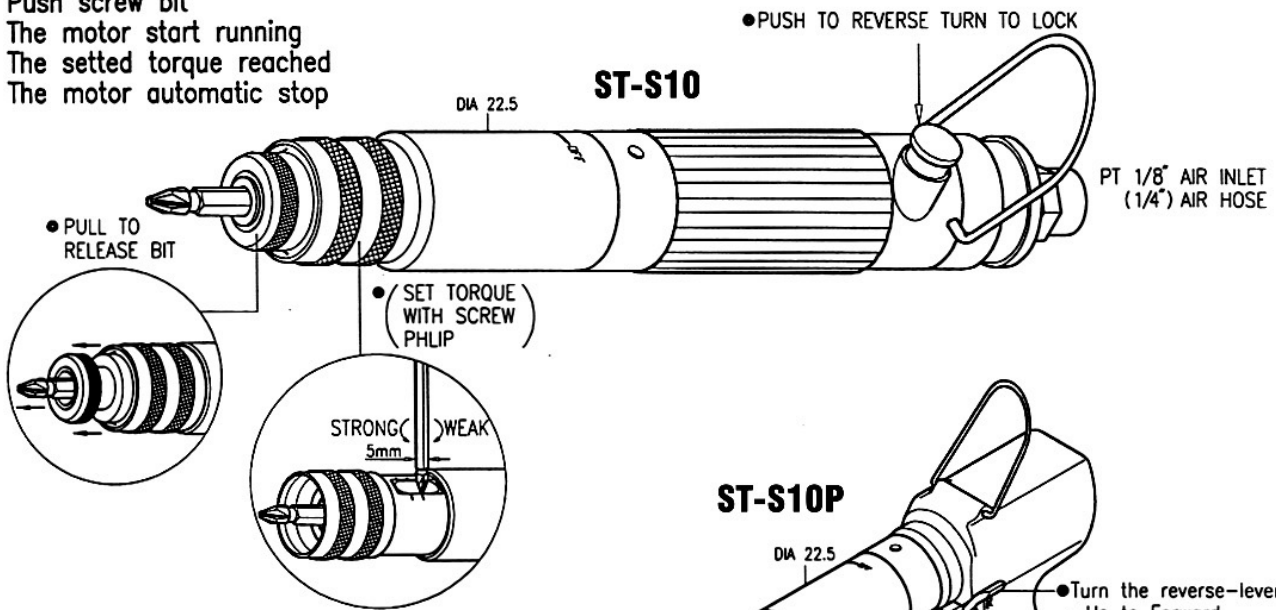




Modelo ST-S1011 ST-S1011P ST-S1015 ST-S1015P ATORNILLADOR

- Operation for straight line type
 - Push screw bit
 - The motor start running
 - The setted torque reached
 - The motor automatic stop



- Operation for pistol type
 - Press the trigger lever
 - The motor start running
 - The setted torque reached
 - The motor automatic stop

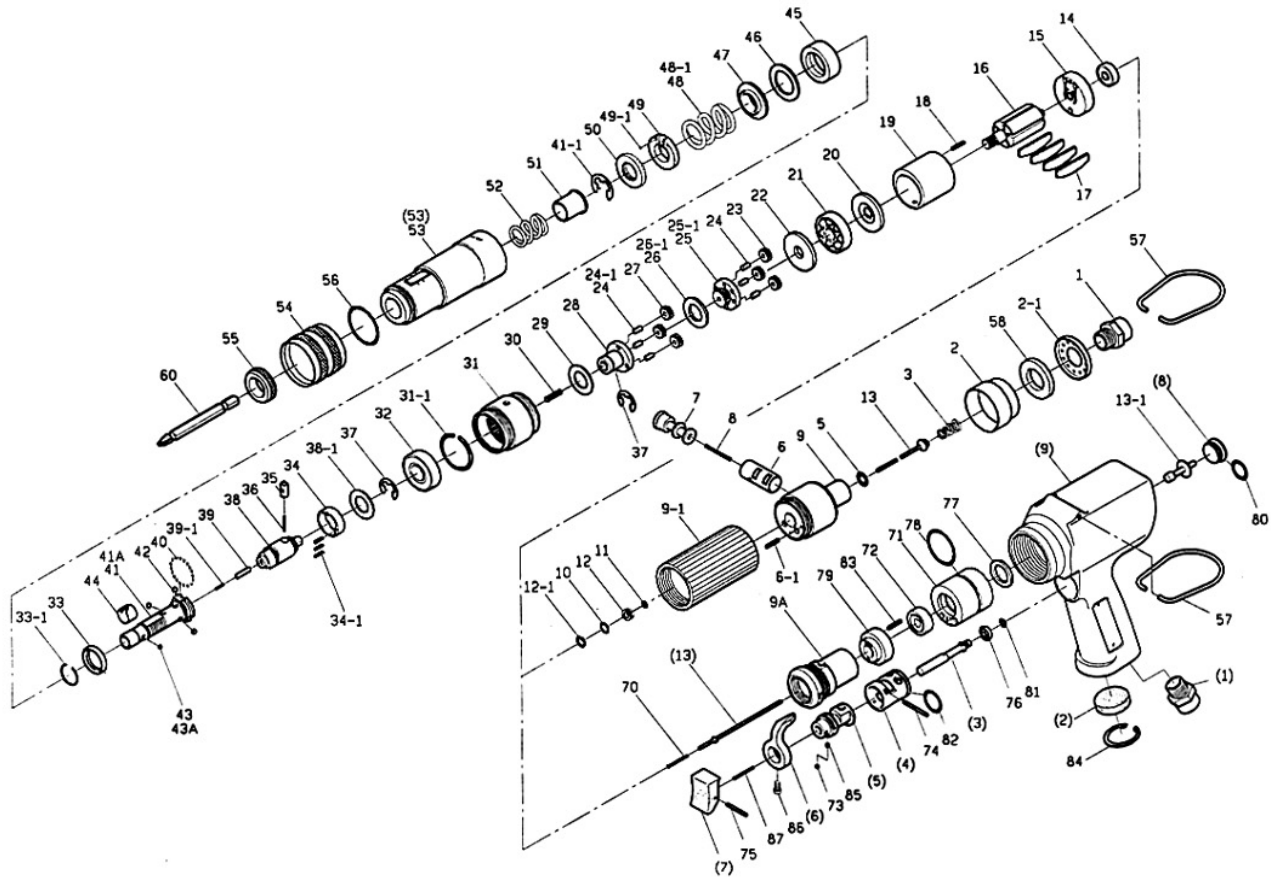
SPECIFICATIONS

Model	Capacity (about)			Free Speed (about)	Weight (about)		Over all Length (about)		Air Inlet Thread (Pipe Tap)	Air Hose Size		Average Air Consumption (about)	
	mm	kgf-cm ²	lbs-in		r.p.m.	lb	kg	in		mm	in	mm	ft ³ /min
ST-S1011	0.2-0.7	2.5-7	2-6	1,100	0.6	0.3	8	203	P. T. 1/8	1/4	6.4	7	0.2
ST-S1015	0.4-1	4-10	3.5-8.7	1,500	0.6	0.3	8	203	P. T. 1/8	1/4	6.4	7	0.2
ST-S1011P	0.2-0.7	2.5-7	2-6	1,100	1.4	0.7	7	185	P. T. 1/8	1/4	6.4	7	0.2
ST-S1015P	0.4-1	4-10	3.5-8.7	1,500	1.4	0.7	7	185	P. T. 1/8	1/4	6.4	7	0.2

- PERFORMANCE WITH DRY & CLEAN AIR, THE AIR PRESSURE ABOUT 5 KG/CM²(70PSI)
- LUBRICATION:
 - SUPPLY TURBINE OIL FOR AIR MOTOR (FOR EXAMPLE MOBIL TURBINE #32, SHELL TURBINE #32 OR EQUIVALENTS)—
 - SUPPLY HIGH QUALITY GREASE FOR GEAR, CLUTCH & BEARING (FOR EXAMPLE SHELL ALVANIA #2, MOBIL PLEX #2, OR EQUIVALENTS)
- CLUTCH DISASSEMBLY:
 - TO LOOSEN THE HOUSING (53) CLOCKWISE WITH HAND OR STRAP WRENCH
 - REMOVE THE RING (41-1) AND TURN OFF (50), TAKE OFF (49,48,47,46,45,42)
 - REMOVE THE RING (37) AND TAKE OFF (40,33,34), THEN PULL OFF (38,39,39-1) AND (35,36)
 - TO ASSEMBLE IN REVERSE ORDER AS THE INSTRUCTION ABOVE (SEE THE PARTLISTS VIEW)
- MOTOR DISASSEMBLE:
 - TO CLAMP THE HANDLE [(09) OR 09] WITH A SOFT 2-JAW FOR PISTOL TYPE, A SOFT 3-JAW (THE RIGHT DIAMETER) FOR STRAIGHT LINE TYPE.
 - TO LOOSEN THE HOUSING (31) CLOCKWISE WITH A SPECIAL WRENCH (FIT THE (31) DIAMETER) THEN PULL OFF THE END PLATE, CYLINDER & ROTOR
 - TO ASSEMBLE IN REVERSE ORDER AS THE INSTRUCTION ABOVE (SEE THE PARTLISTS VIEW)

SPECIFICATIONS SUBJECT TO CHANGE WITHOUT NOTICE.

ST-S10(10P)series-I-0501A-NR



PART LIST (WHEN ORDERING SPARE PART, PLEASE SPECIFY TOOL MODEL, PART NO. AND PART NAME)

REF NO	PART NO	PART NAME	QTY	REF NO	PART NO	PART NAME	QTY	REF NO	PART NO	PART NAME	QTY
STRAIGHT HANDLE											
1	9090-28	AIRINLET 1/8	1	35	0140-361	CONTROL PIN	1	(8)	0101-011	SCREW CAP	1
2	0100-090	EXHAUST DEFLECTOR	1	36	9070-004	SPRING (2.35*7)	1	(9)	0141-010	PISTOL CASING	1
2-1	0100-092	DEFLECTOR CAP	1	37	9050-C37	S TYPE HOLDER (C37)	2	9A	0101-012	CASING CONNECTOR	1
3	9070-101	SPRING (CONE) 4m/m	1	38	0100-360	DRIVING CLUTCH	1	(13)	0101-040	START BAR	1
5	9062-4.5	O. RING (4.5*2)	1	38-1	0140-236	SPACER	1	13-1	0100-041	SHUT BAR	1
6	0100-021	REVERSE VALVE	1	39	9033-11	NEEDLE PIN 3*10.8	1	(53)	0101-310	CLUTCH CASING	1
6-1	9032-12	NEEDLE PIN 2*11.8	1	40	9010-2.4	BALL (3/32)	12	70	9070-303	SPRING (3*14)	1
7	0100-020	REVERSE TRIGGER	1	41	0100-630	ANVIL (HEX 6.35)	1	71	0141-050	REAR PLATE VALVE	1
8	9070-202	SPRING (2.5*13)	1	41A	0100-631	ANVIL (5m/m) →FOR A TYPE	1	72	0141-052	HOLDER CAP	1
9	0100-010	CASING	1	41-1	9050-E9	E TYPE (ETW9)	1	73	9010-3.2	BALL (1/8)	1
9-1	0100-011	OUTER CASING	1	42	9010-3.2	BALL (1/8)	3	74	9032-23	NEEDLE PIN 2*22.8	1
10	906S-060	O. RING (6*1)	1	43	9010-3.2	BALL (1/8)	1	75	9032-16	NEEDLE PIN 2*15.8	1
11	9061-021	O. RING (2*1.5)	1	43A	9010-4	BALL (5/32) →FOR A TYPE	1	76	0101-023	AIR INLET SPACER (TFL)	1
12	0100-051	ORING HOLDER	1	44	0140-640	BIT BAND	1	77	0141-053	SHUTTING SPACER (PU)	1
12-1	9050-R8	R TYPE HOLDER (R8)	1	45	0100-350	CLUTCH	1	78	9060-019	O. RING (25.35*1.78)	1
13	0100-040	START BAR	1	46	0100-352	SPACER (TFL)	1	79	0101-055	TRANSFER VALVE	1
30	9070-304	SPRING (4.5*11.7)	1	47	0100-351	SPACER	1	80	9062-11	O. RING (11*2)	1
58	0100-091	MUFFLER FILTER	1	48	9070-501	SPRING (17.2*19*1.6)	1	81	9060-S4	O. RING (3.5*1.5)	1
COMMON PARTS											
14	9020-684	BALL BEARING (684)	1	48-1	9070-521	SPRING (17.7*19*1.8)	1	82	9060-017	O. RING (17.17*1.78)	1
15	0100-110	REAR PLATE	1	49	0100-321	ADJUSTING NUTLOCK	1	83	9032-7.8	NEEDLE PIN 2*7.8	1
16	0100-130	ROTOR	1	49-1	9010-1.6	BALL (1/16)	2	84	9050-R24	R TYPE HOLDER (R24)	1
17	0100-140	BLADE	4	50	0100-320	ADJUSTING NUT	1	85	9070-005	SPRING (3*3)	1
18	9041-010	SPRING PIN 1.6*16	1	51	0100-620	ANVIL BUSHING	1	86	9114-404	SCREW (M4*0.7)	1
19	0100-120	CYLINDER	1	52	9070-401	SPRING (17.1*10)	1	87	9070-300	SPRING	1
20	0100-111	SPACER	1	53	0100-310	CLUTCH CASING	1	FOR ST-S1011 & ST-S1011P			
21	9020-606	BALL BEARING (606)	1	54	0100-690	ADJUSTABLE BAND	1	23	0140-241	PLANET GEAR	6
22	0100-111	SPACER	1	55	0140-610	BIT BUSHING CASING	1	24	9032-010	NEEDLE PIN 2.5*7.8	6
28	0100-230	GEAR CAGE	1	56	9060-017	O. RING (17.17*1.78)	1	25-1	0100-251	GEAR CAGE & GEAR	1
29	0100-236	SPACER (1m/m)	1	57	0350-080	SUSPENSION RING	1	26-1	0100-257	SPACER (2m/m)	1
31	0100-220	INTERNAL GEAR	1	60	9102-50	BIT NO2(6.35*50)	1	FOR ST-S1015 & ST-S1015P			
31-1	9051-23	RING	1	PISTOL HANDLE							
32	9021-689	BALL BEARING (689)	1	(1)	9090-19	AIRINLET 1/4	1	23	0140-241	PLANET GEAR	3
33	0100-363	BALL KEEPER	1	(2)	0101-091	MUFFLER FILTER	1	24	9032-010	NEEDLE PIN 2.5*7.8	3
33-1	9051-17	RING	1	(3)	0101-030	TRIGGER BAR	1	24-1	9032-7.8	NEEDLE PIN 2*7.8	3
34	0100-362	CONTROL RING	1	(4)	0101-021	VALVE	1	25	0100-250	GEAR CAGE & GEAR	1
34-1	9031-011	NEEDLE PIN 1.5*7.8	3	(5)	0101-020	REVERSE VALVE	1	26	0100-256	SPACER (2m/m)	1
				(6)	0101-022	REVERSE LEVER	1	27	0100-241	PLANET GEAR	3
				(7)	0101-032	TRIGGER	1				