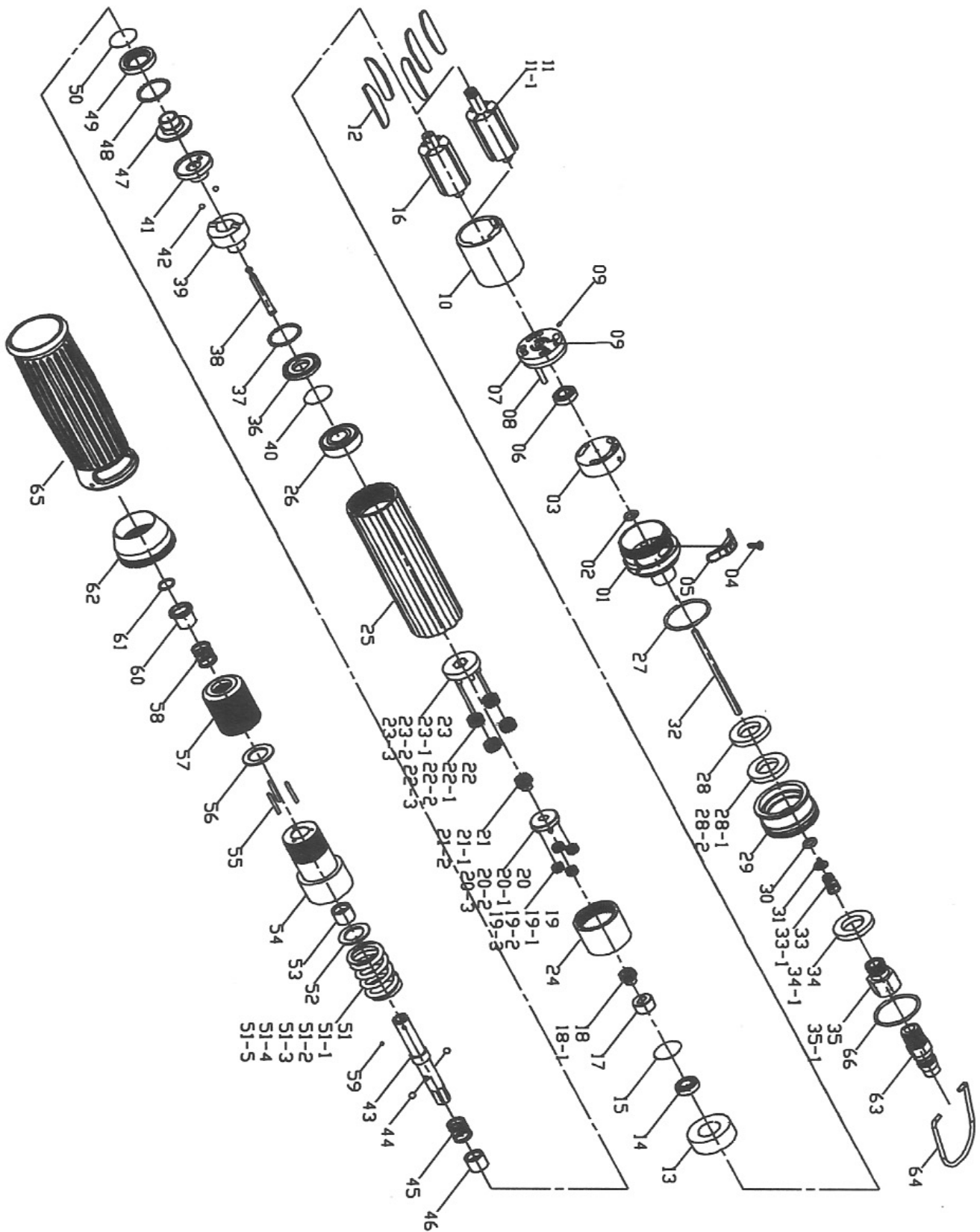


MODELO ST-44000A, ST-44000, ST-44001,  
ST-44001A, ST-44002, ST-44002A  
ATORNILLADOR DE PAR CONTROLADO





# MODELO ST-44000A, ST-44000, ST-44001, ST-44001A, ST-44002, ST-44002A Δ TORNILLADOR DE PAR CONTROLADO

## PARTS LIST

No.	Parts No.	Description	Q't.
1	5A3004	End Housing	1
2	7Q2005	O Ring (6.5x2)	1
3	2P3000	Valve	1
4	7S2100	Set Screw (M2.6x8)And Washer	1
5	2L3010	Switch	1
6	7S2001	Ball Bearing {624ZZ}	1
7	1S3001	End Plate	1
8	6S2011	Roll Pin [2x18]	1
9	7S2201	Roll Pin [1.6x5]	2
10	1P3005	Cylinder	1
11	1S3040	Rotor [ST-44000A, ST-44000, ST-44002]	1
11-1	1S3041	Rotor [ST-44002A]	1
12	1P3050	Blade	5
13	1P3060	Front Plate	1
14	7S2002	Ball Bearing [688ZZ]	1
15	6N2020	C Ring [ST-44000A, ST-44000, ST-44002, ST-44002A]	1
16	1S3043	Rotor [ST-44001, ST-44001A]	1
17	1S3050	Connect [ST-44001, ST-44001A]	1
18	1P2270	First Main Gear [ST-44001]	1
18-1	1P2271	First Main Gear [ST-44001A]	1
19	1P2101	First Plant Gear [ST-44000A, ST-44000, ST-44002]	4
19-1	1P2110	First Plant Gear [ST-44001]	4
19-2	1P2102	First Plant Gear [ST-44001A]	7
19-3	1P2120	First Plant Gear [ST-44002A]	4
20	1P3280	First Gear Cage [ST-44000A, ST-44000, ST-44002]	1
20-1	1P3274	First Gear Cage [ST-44001]	1
20-2	1P6294	First Gear Cage [ST-44001A]	1
20-3	1P2283	First Gear Cage [ST-44002A]	1
21	1P2270	Second Main Gear [ST-44000A, ST-44000]	1
21-1	1P2271	Second Main Gear [ST-44001A]	1
21-2	1P2090	Second Main Gear [ST-44002]	1
22	1P2110	Second Plant Gear [ST-44000A, ST-44000, ST-44001]	4
22-1	1P2102	Second Plant Gear [ST-44001A]	7
22-2	1P2130	Second Plant Gear [ST-44002]	4
22-3	1P2121	Second Plant Gear [ST-44002A]	4
23	1P2284	Second Gear Cage [ST-44001]	1
23-1	1P6297	Second Gear Cage [ST-44001A]	1
23-2	1P2285	Second Gear Cage [ST-44002]	1
23-3	1P2286	Second Gear Cage [ST-44002A]	1
24	1S2061	Internal Gear	1
25	5A3010	Center Housing	1
26	7S5003	Ball Bearing [6901ZZ]	1
27	7Q2015	O-Ring (24x1.8)	1
28	2P3011	First Silencer (40µm) [ST-44000A, ST-44000]	2
28-1	2P3010	First Silencer (70µm) [ST-44001, ST-44001A, ST-44002, ST-44002A]	2
28-2	2S2104	Washer [ST-44002A]	1

No.	Parts No.	Description	Q't.
29	2A3001	Exhaust Deflector	1
30	7Q2007	O-Ring (3 x2)	1
31	6S2020	Valve Plate	1
32	6S2004	Operating Rod	1
33	6N2100	Cone Spring [ST-44000A, ST-44000]	1
33-1	6N2101	Cone Spring [ST-44001, ST-44001A, ST-44002, ST-44002A]	1
34	2P3020	Second Silencer	1
34-1	2P3019	Second Silencer	1
35	2S2001	Air Inlet Bushing (PT PS) [ST-44000A, ST-44000]	1
35-1	2S2002	Air Inlet Bushing (PS) [ST-44001, ST-44001A, ST-44002, ST-44002A]	1
36	2S2103	Retainer	1
37	7S2102	Ball [2.0]	28
38	3S2001	Pilot Pin	1
39	3S2211	Rear Clutch	1
40	6N2006	C Ring	1
41	3S2215	Center Clutch	1
42	7S2112	Ball [1/8]	2
43	3S2021	Anvil [6.35Hex]	1
44	7S2105	Ball [4.0]	2
45	6N2110	Spring [0.6x10.2x11.0]	1
46	3S2226	Slide Base	1
47	3S2222	End Clutch	1
48	7S2102	Ball [2.0]	22
49	3S2231	Ball Race	1
50	6N3100	C Ring	1
51	6N3001	Torque Spring [1.4 - ST-44000A]	1
51-1	6N3002	Torque Spring [1.8 - ST-44000]	1
51-2	6N3003	Torque Spring [2.2 - ST-44001]	1
51-3	6N3013	Torque Spring [2.3 - ST-44001A]	1
51-4	6N3004	Torque Spring [2.7 - ST-44002]	1
51-5	6N3005	Torque Spring [2.8 - ST-44002A]	1
52	2S2120	Washer [20x14]	1
53	3S2240	Anvil Bushing	1
54	3A2201	Clutch Housing	1
55	6S2010	Needle Pin [2.0x18.8]	3
56	3S3101	Regulation Washer	1
57	3A3031	Torque Ring	1
58	6N2003	Spring [0.55x10.2x12x4]	1
59	7S3107	Ball [2.38-B]	1
60	5S2001	Bit Slide Sleeve	1
61	6N2001	C Ring	1
62	5A3020	Rear Housing	1
63	2U2002	Air House Nipple	1
64	5N3003	Suspension Ring	1
65	5L3005	Soft Cover-B (Rubber)	1
66	5L2023	Color Ring	4