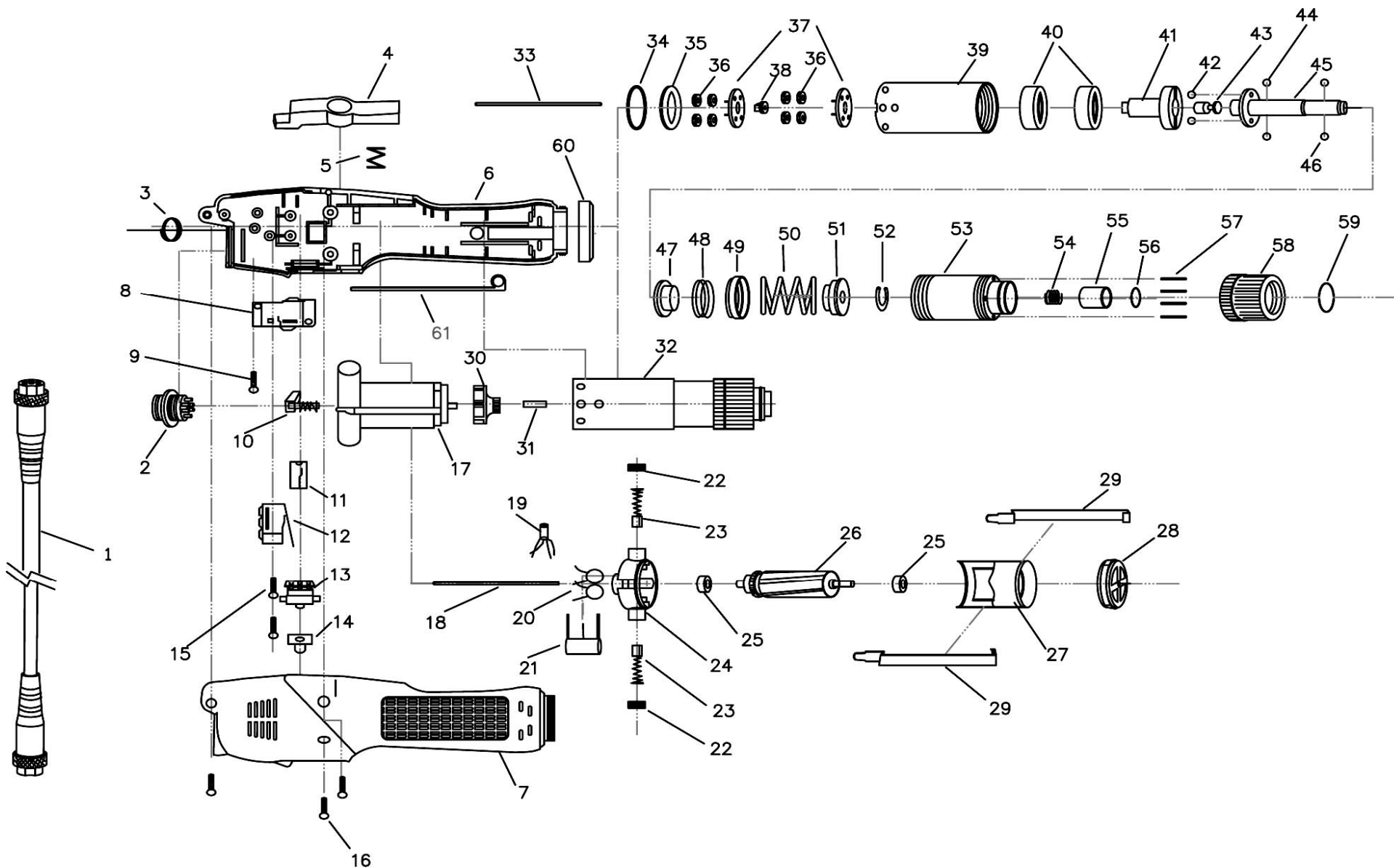


412L/C ATORNILLADOR ELÉCTRICO CON DESCONEXIÓN



EA-412L(416L)/C-P-1003A-K2

412L/C ATORNILLADOR ELÉCTRICO CON DESCONEXIÓN

PARTS LIST

No.	Parts No.	Description	Q'ty
1	EPAA50001N	Cord Assembly 6'ft	1
	EPAA50001-1N	Cord Assembly 9'ft	1
2	EPPZ50160	Connector	1
3	EPCJ20011	Suspension Ring	1
4	EPC50014	Trigger Assembly -Grey/Black	1
	EPC50015	Trigger Assembly -Black(Esd)	1
5	EPCK20051	Spring	1
6	EPCB50037	Housung-Underside -Grey/Black	1
	EPCB50037-1	Housung-Underside -Black(Esd)	1
7	EPCA50227	Housung-Upside -Grey/Black	1
	EPCA50227-1	Housung-Upside -Black(Esd)	1
8	EPHB20081	Start Switch	1
9	EPCH30003	Screw	1
10	EPCE50121	Push Rod	1
11	EPCE50151	Fixture	1
12	EPHB50061	Shut Off Switch	1
13	EPHA28071	Changeover Switch	1
	EPHA28071-4	Changeover Switch For SP-32HL60T	1
14	EPCI30211	Changeover Switch Cap For EA-412L/C	1
	EPCI30212	Changeover Switch Cap For EA-416L/C	1
15	EPCH90151	Screw	3
16	EPCH20102	Screw	3
17	EPMO50112-6	Motor Assembly For EA-412L/C	1
	EPMO50112-7	Motor Assembly For EA-416L/C	1
18	EPMI30511	Pilot Rod	1
19	EPEE30521-1	Coil	1
20	EPEB33610	Ceramics Capacitor	2
21	EPEF51431-1	Capacitor	2
22	EPMD20151	Brush Cap	2
23	EPMC71411	Capbon Brush	1
24	EPML50571-1	Motor Top Cover	2
25	EPME20181	Ball Bearing	1
26	EPMH50601	Armature For EA-412L/C	1
	EPMH50601-1	Armature For EA-416L/C	1
27	EPMJ50631	Motor Yoke Assembly For EA-412L/C	1
	EPMJ30631	Motor Yoke Assembly For EA-416L/C	1
28	EPMB20221	Motor End Cover	2
29	EPMA20211B	Assembling Spring	1
30	EPMK20131	Fan	1
31	EPMG30081	Pilot Rod	1
32	EPGZ30071-2A	Clutch Assembly For EA-412L/C Hex. 5mm (Opt.)	1
	EPGZ30071-2B	Clutch Assembly For EA-412L/C Hex. 6.35mm	1
	EPGZ30071-2C	Clutch Assembly For EA-412L/C Φ4mm (Opt.)	1
	EPGZ30071-2D	Clutch Assembly For EA-412L/C Φ5mm (Opt.)	1
	EPGZ30071-3A	Clutch Assembly For EA-416L/C Hex. 5mm (Opt.)	1
	EPGZ30071-3B	Clutch Assembly For EA-416L/C Hex. 6.35mm	1

No.	Parts No.	Description	Q'ty
32	EPGZ30071-3C	Clutch Assembly For EA-416L/C Φ4mm (Opt.)	1
	EPGZ30071-3D	Clutch Assembly For EA-416L/C Φ5mm (Opt.)	1
33	EPMI30241	Pilot Rod For Hex. 5mm, Φ4mm, Φ5mm Type (Opt.)	1
	EPMI30241-1	Pilot Rod For Hex. 6.35mm Type	1
34	EPGK20231	"C" Ring For EPCH20241	1
35	EPGI20251-1	Iron Washer	1
36	EPGH20241	Idle Gear	8
37	EPGG20271	Gear Seat	2
38	EPG20101	Central Gear	1
39	EPGA30311-5	Gear Case	1
40	EPGN30321	Main Bearing	2
41	EPGC30341	Cam	1
42	EPGP30351	Steel Balls	2
43	EPGU30361	Stop Pilot	1
44	EPGP30351	Stell Balls	2
45	EPGD30381A	Shaft For Hex. 5mm Type (Opt.)	1
	EPGD30381B	Shaft For Hex. 6.35mm Type	1
	EPGD30381C	Shaft For Φ4mm Type (Opt.)	1
	EPGD30381D	Shaft For Φ5mm Type (Opt.)	1
46	EPGP20331	Steel Balls For Hex. 5mm, Φ5mm Type(2mm) (Opt.)	2
	EPGP20331B	Steel Balls For Hex. 6.35mm Type(2.38mm)	2
	EPGP21291B	Steel Balls For Φ4mm Type(2.5mm) (Opt.)	2
47	EPGF30401	Waring Plate For Hex. 5mm, Φ4mm, Φ5mm Type (Opt.)	1
	EPGF30401B	Waring Plate For Hex. 6.35mm Type	1
48	EPGO30541	Spring For EA-412L/C	1
	EPGO30541-1	Spring For EA-416L/C	1
49	EPGO30531	Spring Cap	1
50	EPGE50411-1	Waring Spring For EA-412L/C	1
	EPGE30413-2	Waring Spring For EA-416L/C	1
51	EPGY30421	Waring Spring Base For Hex. 5mm, Φ4mm, Φ5mm Type (Opt.)	1
	EPGY30421B	Waring Spring Base For Hex. 6.35mm Type	1
52	EPGK20231B	"C"-Ring For EPGY30421B (Hex. 6.35mm)	1
53	EPGB30441-7	Clutch Case For Hex. 5mm, Φ4mm, Φ5mm Type (Opt.)	1
	EPGB30441-7A	Clutch Case For Hex. 6.35mm Type	1
54	EPGO20391	Bit Spring For Hex. 5mm, Φ4mm, Φ5mm Type (Opt.)	1
	EPGO20391B	Bit Spring For Hex. 6.35mm Type	1
55	EPGJ30461	Bit Sleeve For Hex. 5mm, Φ4mm, Φ5mm Type (Opt.)	1
	EPGJ3046B	Bit Sleeve For Hex. 6.35mm Type	1
56	EPGQ30471	"C" Ring For Hex. 5mm, Φ4mm, Φ5mm Type (Opt.) EPGJ30461	1
	EPGQ21361	"C" Ring For EPGJ3046B	1
57	EPGL30481-1	Torque Adjust Pin	4
58	EPGM30491	Torque Adjust Ring	1
59	EPGS30501	"C" Ring For EPGM30491	1
60	EPCD20111-1	Coupler	1
	EPCD20111-2	Coupler (Esd)	1
61	EPCH50671C	Grounding Means	1

EA-412L(416L)/C-P-1003A-K2