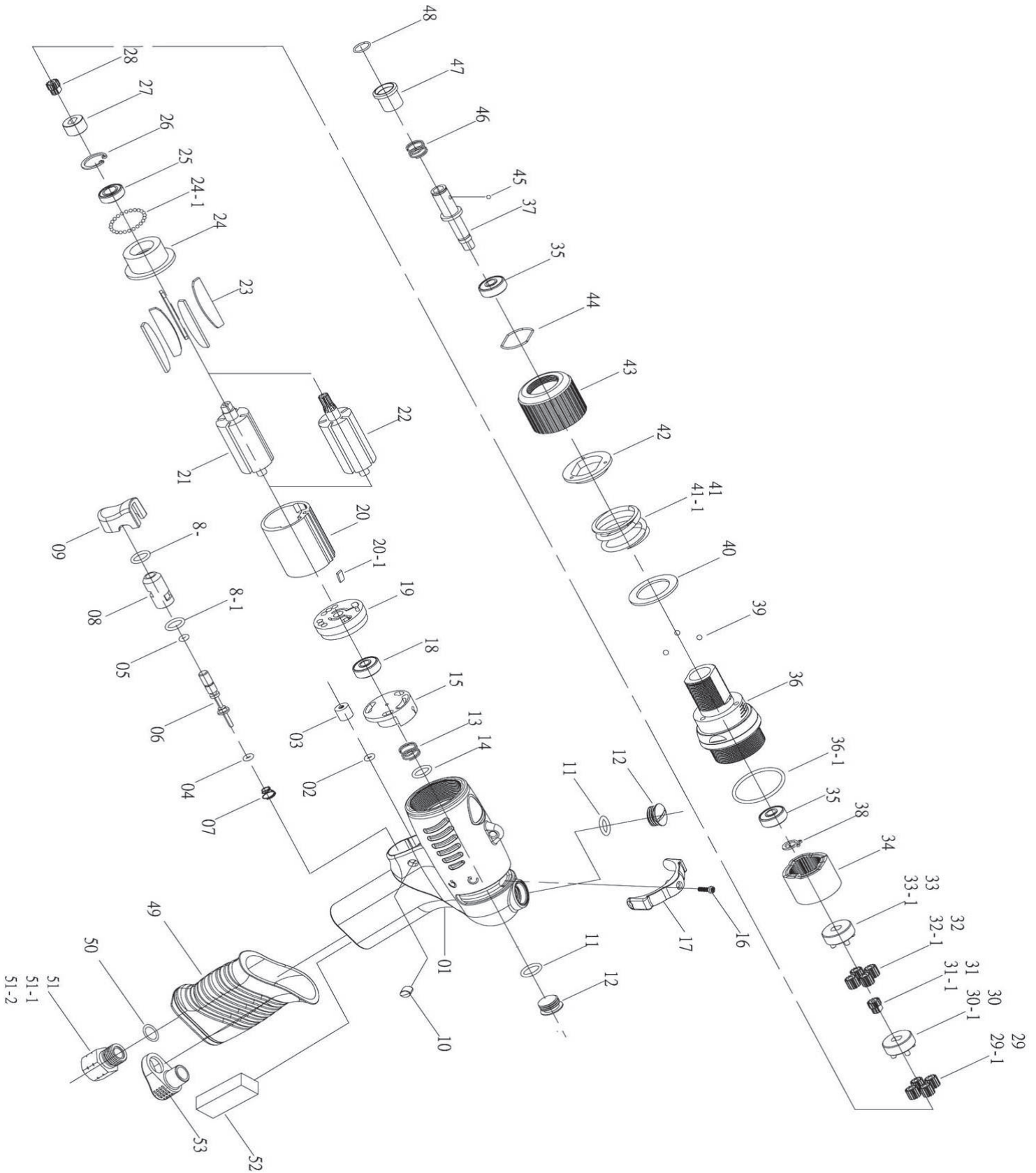




MODELO CCP-58

ATORNILLADOR PISTOLA 750 RPM





MODELO CCP-58

ATORNILLADOR PISTOLA 750 RPM

PARTS LIST

No.	Parts No.	Description	Q'ty
1	5L2027	Pistol Housing [Red]	1
2	7Q2008	O-Ring (5x1.0)	1
3	2C2003	Blank Cap	1
4	7Q2006	O-Ring (3.5x2)	1
5	7Q6112	Valve O-Ring (3x1.5)	1
6	6S2023	Valve Pin	1
7	6N2106	Cone Spring	1
8	6S2024	Valve Bushing	1
8-1	7Q2009	O-Ring	2
9	5L2701	Button [Black]	1
10	5L2116	Cap [Black]	2
11	2Q5001	O-Ring (P10)	2
12	2S2011	Screw Cap	2
13	6N5006	Spring	1
14	7Q2011	O Ring	1
15	6S6106	Valve	1
16	7S2107	Set Screw [M2.6x10] And Washer	1
17	2L6011	Switch	1
18	7S5001	Ball Bearing (606ZZ)	1
19	1S6001-A	End Plate	1
20	1P6005	Cylinder	1
20-1	2S2023	Key	1
21	1S6048	Rotor [CCP-48]	1
22	1S6047	Rotor [CCP-58]	1
23	1P6051	Blade	6
24	1P6062	Front Plate	1
24-1	7S2102	Ball (2.0)	36
25	7S2002	Ball Bearing (688ZZ)	1
26	6N2020	C Ring [CCP-58]	1
27	1S3050	Connect [CCP-48]	1
28	1P2271	First Main Gear [CCP-48]	1
29	1P2102	First Plant Gear [CCP-48]	7
29-1	1P2101	First Plant Gear [CCP-58]	4

No.	Parts No.	Description	Q'ty
30	1P6294	First Gear Cage [CCP-48]	1
30-1	1P3280	First Gear Cage [CCP-58]	1
31	1G6271	Second Main Gear [CCP-48]	1
31-1	1G6090	Second Main Gear [CCP-58]	1
32	1P6111	Second Plant Gear [CCP-48]	7
32-1	1P6130	Second Plant Gear [CCP-58]	4
33	1P6295	Second Gear Cage [CCP-48]	1
33-1	1P6288-1	Second Gear Cage [CCP-58]	1
34	1S3157	Internal Gear	1
35	7S2010	Ball Bearing (688ZZ)	2
36	5A5354	Clutch Housing	1
36-1	2Q2003	O Ring (23 x 2)	1
37	3S5040	Anvil (6.35Hex)	1
38	6N2081	E Ring	1
39	7S2105	Ball (4mm)	3
40	2S5233	Washer	1
41	5N5210	Torque Spring [4.5 - CCP-48]	1
41-1	6N5211	Torque Spring [5.0 - CCP-58]	1
42	3S3221	Regulation Washer	1
43	3A6301	Torque Ring	1
44	6N3301	C Ring	1
45	7S3107	Ball (2.38)	1
46	6N2110	Spring (0.6)	1
47	5S2001	Bit Slide Sleeve	1
48	6N2001	C Ring	1
49	5L2201	Pistol Cover [Black]	1
50	2Q5001	O-Ring (P10)	1
51	2S2005	Air Inlet Bushing (PT)	1
	2S2008	Air Inlet Bushing (PS) (For Italy)	1
	2S2006	Air Inlet Bushing (NPT)	1
52	2P3040	First Silencer	1
53	2P3025	Second Silencer	1

HCP48(58)-P-0903U-MI