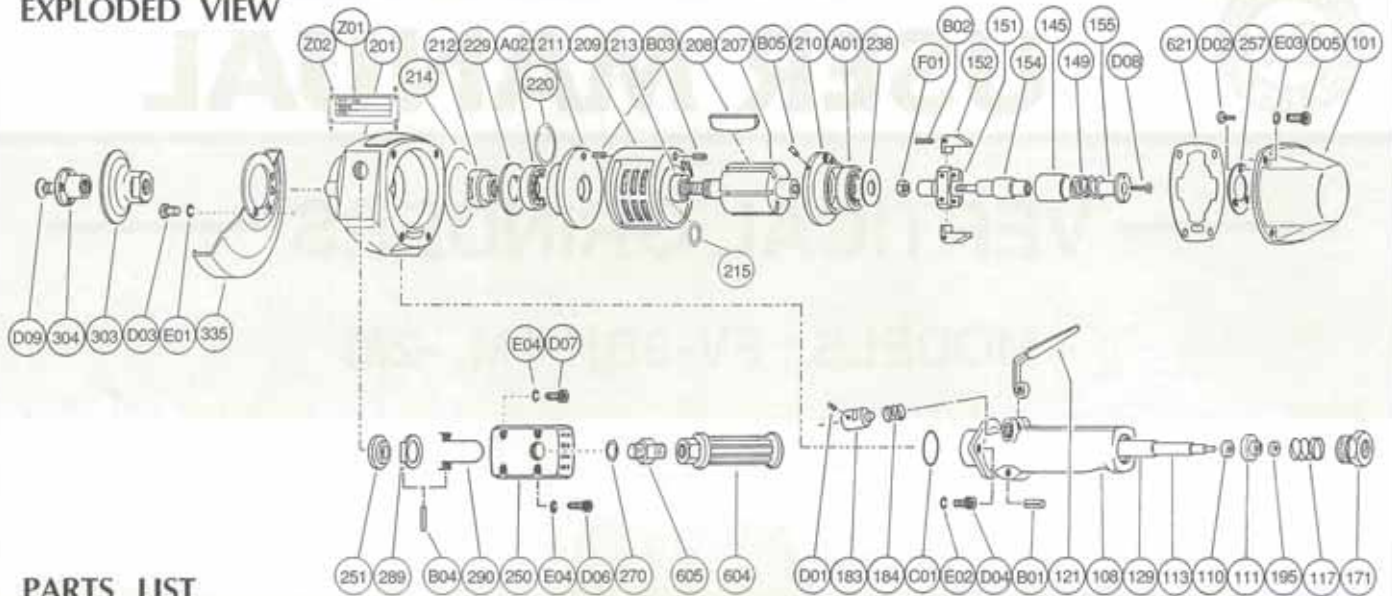


EXPLODED VIEW



PARTS LIST

Index No.	Parts No.	Parts Name	Qt.	Index No.	Parts No.	Parts Name	Qt.
CP No.	A-151003-00	Throttle Valve Body C.P		213	A-150213-00	Adjusting Collar	1
108	A-094003-50	Throttle Valve Body	1	214	A-150214-01	Adjusting Washer <T=0.20>	1
(129)	A-078129-00	Throttle Valve Rod Bushing	1	214	A-150214-02	Adjusting Washer <T=0.25>	1
117	A-078117-01	Throttle Valve Spring	1	214	A-150214-03	Adjusting Washer <T=0.30>	1
121	A-078121-00	Throttle Valve Lever	1	215	A-150215-00	Adjusting Washer <T=0.03>	1
171	IB-6N40S0	Inlet Bushing <PT>	1	215	A-150215-01	Adjusting Washer <T=0.05>	1
171	IB-6N4NS0	Inlet Bushing <NPT>	1	220	A-150220-00	Adjusting Washer <T=0.03>	1
183	A-078183-01	Lock Key	1	229	A-150229-00	Bearing Spacer	1
184	A-078184-00	Lock Spring	1	238	A-150238-00	Bearing Cover 	1
B01	GP-520GCH	Grooved Pin	1	250	A-171250-00	Exhaust Cover	1
D01	SS-48	Set Screw	1	251	A-094251-00	Exhaust Valve	1
CP No.	A-078008-00	Throttle Valve Rod C.P		270	H-001270-00	Conical Spring Washer	1
110	A-078110-01	Throttle Valve	1	289	A-094289-00	Muffler Plate	1
111	A-078111-01	Throttle Valve Washer	1	290	A-150290-00	Muffler Spring	1
113	A-078113-01	Throttle Valve Rod	1	303	A-041303-A	Wheel Flange <A>	1
195	W-080195-00	Sub Throttle Valve	1	304	A-100304-02	Wheel Flange 	1
CP No.	A-150001-00	Housing Cover C.P		335	A-078335-00	Wheel Guard	1
101	A-150101-00	Housing Cover	1	(D03)	CS-616	Cap Screw	4
257	A-150257-00	Washer	1	(E01)	SW-6	Spring Washer	4
D02	S-410R	Screw	3	604	A-025604-02	Dead Handle	1
CP No.	A-150010-00	Governor Weight C.P		605	A-108605-00	Dead Handle Joint	1
151	S-016151-00	Governor Cage	1	621	A-150621-00	Packing <A>	1
152	A-150152-00	Governor Weight	2	A01	BB-6203MN	Ball Bearing	1
154	A-150154-00	Governor Shaft	1	A02	BB-5204	Ball Bearing	1
B02	GP-330GCH	Grooved Pin	2	B04	SP-330	Spring Pin	1
F01	UN-5	*U* Nut	1	B05	SP-36	Spring Pin	1
145	A-150145-00	Governor Valve	1	C01	O-S34	*O* Ring	1
149	A-150149-00	Governor Valve Spring (For-1M)	1	D04	CS-620	Cap Screw	2
149	A-150149-01	Governor Valve Spring (For-2M)	1	D05	CS-620	Cap Screw	4
155	A-150155-00	Governor Valve Spring Holder	1	D06	CS-528	Cap Screw	2
201	A-172201-00	Housing	1	D07	CS-520	Cap Screw	2
207	A-151207-00	Rotor	1	D08	S-412S	Screw	1
208	A-151208-00	Rotor Blade	5	D09	CS-635S	Cap Screw	1
209	A-151209-00	Cylinder	1	E02	SW-6	Spring Washer	2
(B03)	SP-48	Spring Pin	2	E03	SW-6	Spring Washer	4
210	A-150210-00	Cylinder Upper Plate	1	E04	SW-5	Spring Washer	4
211	A-150211-00	Cylinder Lower Plate	1	Z01	NP-0103	Name Plate	1
212	A-150212-00	Rotor Nut	1	Z02	NPN-0x3.2	Screw Rivet	4

- CP No. denotes the assembled parts comprising of more than 1 pc. of parts. The related parts are shown in the thick frame.
- #108, 209 and 335 are supplied together with parts shown in ().
- Specify parts number and quantity in ordering.

- Standard Accessories : F-704.....4mm Hex. Pin Wrench 1.
- F-705.....5mm Hex. Pin Wrench 1.
- F-707.....1/4in Hex. Pin Wrench 1.
- F-109.....24mm Open-End Wrench 1.
- F-203.....32mm Open-End Wrench 1.