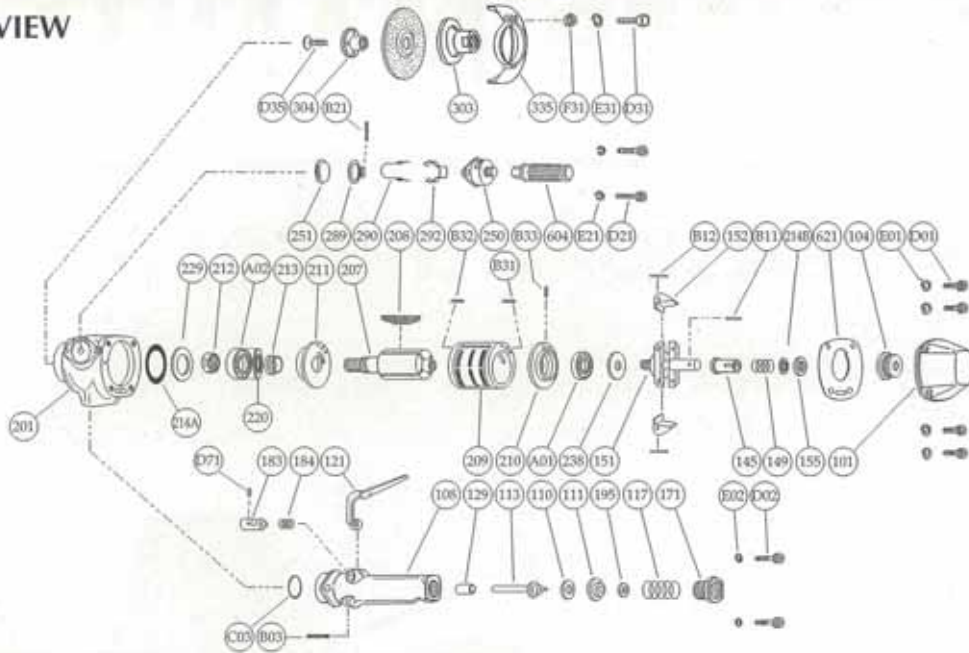


EXPLODED VIEW



PARTS LIST

| Index No. | Parts No. | Parts Name | Qty | Index No. | Parts No. | Parts Name | Qty | Index No. | Parts No. | Parts Name | Qty |
|--------------------------|-------------|-------------------------------------|-----|----------------|-------------|---------------------------|-----|-----------------------------|-------------|-----------------------|-----|
| FV-7-1M, -2M, -4M | | | | | | | | | | | |
| — | A-094003-00 | Throttle Valve Body Ass'y (PT) | | 212 | A-094212-00 | Rotor Nut | 1 | 289 | A-094289-00 | Muffer Plate | 1 |
| — | A-094003-02 | Throttle Valve Body Ass'y (NPT) | | 213 | A-094213-00 | Adjusting Collar | 1 | 290 | A-094290-03 | Muffer Spring | 1 |
| 108 | A-094108-00 | Throttle Valve Body | 1 | 214A | A-069214-00 | Adjusting Washer (T=0.2) | 1 | 292 | A-094292-00 | Muffer Plate Holder | 1 |
| (129) | A-078129-00 | Throttle Valve Rod Bushing | 1 | | A-069214-01 | Adjusting Washer (T=0.3) | 1 | B21 | SP-325 | Spring Pin | 1 |
| 117 | A-078117-01 | Throttle Valve Spring | 1 | | A-069214-02 | Adjusting Washer (T=0.5) | 1 | — | A-193010-02 | Governor Weight Ass'y | |
| 121 | A-078121-00 | Throttle Valve Lever | 1 | 214B | A-094214-01 | Adjusting Washer (T=0.20) | 1 | 151 | A-193151-00 | Governor Cage | 1 |
| 171 | IB-6N30S0 | Inlet Bushing (PT) | 1 | | A-094214-02 | Adjusting Washer (T=0.25) | 1 | 152 | G-154152-00 | Governor Weight | 2 |
| | IB-6N3NS0 | Inlet Bushing (NPT) | 1 | | A-094214-03 | Adjusting Washer (T=0.30) | 1 | B12 | GP-2.524GCH | Grooved Pin | 2 |
| 183 | A-078183-01 | Lock Key | 1 | 220 | A-094220-00 | Adjusting Washer (T=0.03) | 1 | FV-7-2M | | | |
| 184 | A-078184-00 | Lock Spring | 1 | 229 | A-094229-00 | Bearing Spacer | 1 | — | A-094012-00 | Exhaust Cover Ass'y | |
| B03 | GP-520GCH | Grooved Pin | 1 | 238 | A-109238-00 | Bearing Cover (B) | 1 | 250 | A-094250-00 | Exhaust Cover | 1 |
| D71 | SS-48 | Set Screw | 1 | 303 | A-041303-A | Wheel Flange (A) | 1 | 251 | A-094251-00 | Exhaust Valve | 1 |
| — | A-078008-00 | Throttle Valve Rod Ass'y | | 304 | A-100304-02 | Wheel Flange (B) | 1 | 289 | A-094289-00 | Muffer Plate | 1 |
| 110 | A-078110-01 | Throttle Valve | 1 | 335 | A-094335-00 | Wheel Guard | 1 | 290 | A-094290-03 | Muffer Spring | 1 |
| 111 | A-078111-01 | Throttle Valve Washer | 1 | (D31) | HS-625 | Hexagon Bolt | 1 | 292 | A-094292-00 | Muffer Plate Holder | 1 |
| 113 | A-078113-01 | Throttle Valve Rod | 1 | (E31) | SW-6 | Spring Washer | 1 | B21 | SP-325 | Spring Pin | 1 |
| 195 | W-080195-00 | Sub Throttle Valve | 1 | (F31) | N-6 | Nut | 1 | — | A-193010-01 | Governor Weight Ass'y | |
| 101 | A-094101-00 | Housing Cover | 1 | 604 | A-025604-02 | Dead Handle | 1 | 151 | A-193151-00 | Governor Cage | 1 |
| 104 | A-078104-00 | Bushing | 1 | 621 | A-094621-00 | Packing (A) | 1 | 152 | G-088152-00 | Governor Weight | 2 |
| 145 | A-077145-00 | Governor Valve | 1 | A01 | BB-6202MN | Ball Bearing | 1 | B12 | GP-2.524GCH | Grooved Pin | 2 |
| 149 | A-084149-00 | Governor Valve Spring (For FV-7-1M) | 1 | A02 | BB-6303 | Ball Bearing | 1 | FV-7-4M | | | |
| | A-159149-00 | Governor Valve Spring (For FV-7-2M) | 1 | B11 | NR-2.515.8 | Needle Roller | 1 | — | A-094012-01 | Exhaust Cover Ass'y | |
| | A-077149-02 | Governor Valve Spring (For FV-7-4M) | 1 | C03 | O-S34 | "O" Ring | 1 | 250 | A-094250-00 | Exhaust Cover | 1 |
| 155 | A-069155-00 | Governor Valve Spring Holder | 1 | D01 | CS-520 | Cap Screw | 4 | 251 | A-094251-00 | Exhaust Valve | 1 |
| 201 | A-094201-00 | Housing | 1 | D02 | CS-620 | Cap Screw | 2 | 289 | A-094289-00 | Muffer Plate | 1 |
| 207 | A-094207-00 | Rotor | 1 | D21 | CS-618 | Cap Screw | 2 | 290 | A-094290-04 | Muffer Spring | 1 |
| 208 | A-094208-00 | Rotor Blade | 4 | D35 | CS-635S | Cap Screw | 1 | 292 | A-094292-00 | Muffer Plate Holder | 1 |
| 209 | A-094209-00 | Cylinder | 1 | E01 | SW-5 | Spring Washer | 4 | B21 | SP-325 | Spring Pin | 1 |
| (B31) | SP-48 | Spring Pin | 1 | E02 | SW-6 | Spring Washer | 2 | — | A-193010-01 | Governor Weight Ass'y | |
| (B32) | SP-48 | Spring Pin | 1 | E21 | SW-6 | Spring Washer | 2 | 151 | A-193151-00 | Governor Cage | 1 |
| 210 | A-094210-00 | Cylinder Upper Plate | 1 | FV-7-1M | | | | | | | |
| (B33) | SP-38 | Spring Pin | 1 | — | A-094012-00 | Exhaust Cover Ass'y | | 152 | G-088152-00 | Governor Weight | 2 |
| 211 | A-094211-00 | Cylinder Lower Plate | 1 | 250 | A-094250-00 | Exhaust Cover | 1 | B12 | GP-2.524GCH | Grooved Pin | 2 |
| | | | | 251 | A-094251-00 | Exhaust Valve | 1 | Standard Accessories | | | |

- The related parts are shown in thick frame.
- #108, 209, 210 and 335 are supplied together with parts shown in ().
- Specify parts number and quantity when ordering.

*For sanding application, there are prepared the optional attachments:
#A-087318-00, Rubber Pad Flange and #RP-7, Rubber Backing Pad.

Standard Accessories

| AC No. | Description | Qty |
|--------|--------------------------|-----|
| F-704 | 4mm Hex. Pin Wrench | 1 |
| F-707 | 6mm Hex. Pin Wrench | 1 |
| F-109 | 24mm Open-End Wrench | 1 |
| F-203 | 32mm Open-End Pin Wrench | 1 |

Optional Accessory

| AC No. | Description | Qty |
|-----------|-------------|-----|
| HN-304000 | Hose Nipple | 1 |