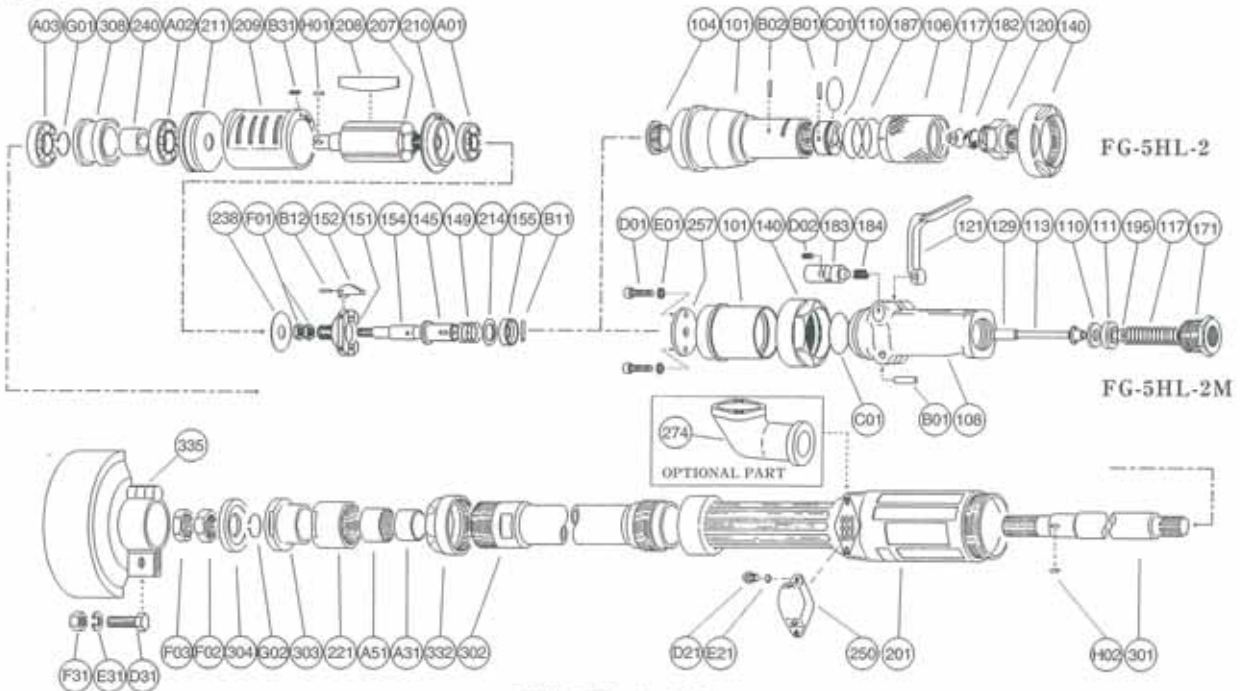


#### EXPLODED VIEW



#### PARTS LIST

#### FG-5HL-2, -2M

Index No.	Parts No.	Parts Name	Qt.
<b>FG-5HL-2</b>			
Ass'y No.	A-086001-00	Housing Cover Ass'y (PT)	
Ass'y No.	A-086001-01	Housing Cover Ass'y (NPT)	
101	A-086101-00	Housing Cover	1
104	A-065104-02	Bushing	1
106	A-086106-00	Throttle Valve Handle	1
110	A-086110-00	Throttle Valve	1
117	A-086117-00	Throttle Valve Spring	1
120	A-086120-00	Throttle Valve Cover (PT)	1
	A-086120-01	Throttle Valve Cover (NPT)	1
182	A-086182-00	Strainer	1
187	A-086187-00	Throttle Valve Handle Spring	1
B01	NR-415	Needle Roller	1
B02	NR-413	Needle Roller	1
C01	O-S20	*O* Ring	1
<b>FG-5HL-2M</b>			
Ass'y No.	A-108001-01	Housing Cover Ass'y	
101	A-108101-00	Housing Cover	1
140	G-152140-00	Cup Nut	1
257	A-108257-00	Washer	1
C01	O-S34	*O* Ring	1
D01	CS-518	Cap Screw	2
E01	SW-5	Spring Washer	2
Ass'y No.	A-096003-00	Throttle Valve Body Ass'y (PT)	
Ass'y No.	A-096003-03	Throttle Valve Body Ass'y (NPT)	
108	A-096003-50	Throttle Valve Body	1
(129)	A-078129-00	Throttle Valve Rod Bushing	1
117	A-078117-01	Throttle Valve Spring	1
121	A-078121-00	Throttle Valve Lever	1
171	IB-6N30S0	Inlet Bushing (PT)	1
	IB-6N3NS0	Inlet Bushing (NPT)	1
183	A-078183-01	Lock Key	1
184	A-078184-00	Lock Spring	1
B01	GP-520GCH	Grooved Pin	1
D02	SS-48	Set Screw	1
Ass'y No.	A-078008-00	Throttle Valve Rod Ass'y	
110	A-078110-01	Throttle Valve	1
111	A-078111-01	Throttle Valve Washer	1
113	A-078113-01	Throttle Valve Rod	1
195	W-080195-00	Sub Throttle Valve	1
<b>FG-5HL-2, -2M</b>			
Ass'y No.	A-065010-03	Governor Weight Ass'y	
151	A-065151-00	Governor Cage	1
152	A-010152-00	Governor Weight	2
154	A-108154-00	Governor Shaft	1
B12	GP-2.516GCH	Grooved Pin	2
F01	N-3	Nut	2

Index No.	Parts No.	Parts Name	Qt.
140	G-152140-00	Cup Nut (For FG-5HL-2)	1
145	A-065145-00	Governor Valve	1
149	G-063149-00	Governor Valve Spring	1
155	A-065155-00	Governor Valve Spring Holder	1
201	G-155201-00	Housing	1
207	A-108207-00	Rotor	1
208	A-108208-00	Rotor Blade	4
209	A-108209-00	Cylinder	1
(B31)	SP-38	Spring Pin	1
210	A-108210-00	Cylinder Upper Plate	1
211	A-108211-00	Cylinder Lower Plate	1
214	A-065214-00	Adjusting Washer (T = 0.2)	1
	A-065214-01	Adjusting Washer (T = 0.3)	1
	A-065214-02	Adjusting Washer (T = 0.5)	1
221	G-155221-00	Spindle Bearing Cover	1
238	A-108238-00	Bearing Cover (B)	1
240	G-152240-00	Coupling	1
250	G-152250-00	Exhaust Cover	1
(D21)	CS-510B	Cap Screw	2
(E21)	SW-5	Spring Washer	2
301	G-155301-03	Wheel Spindle	1
302	G-155302-00	Wheel Spindle Case	1
303	G-170303-06	Wheel Flange (A)	1
304	G-170304-05	Wheel Flange (B)	1
308	G-152308-00	Spacer	1
332	G-155332-00	Lock Nut	1
335	G-155335-00	Wheel Guard	1
(D31)	HS-625	Hexagon Bolt	1
(E31)	SW-6	Spring Washer	1
(F31)	N-6	Nut	1
A01	BB-6001	Ball Bearing	1
A02	BB-6301	Ball Bearing	1
A03	BB-6202	Ball Bearing	1
A31	NB-HK2020	Needle Bearing	1
A51	IR-172020.5	Inner Race	1
B11	NR-211.8	Needle Roller	1
F02	N-W1/2	Nut	1
F03	N-W1/2(3)	Nut	1
G01	SR-S15	Snap Ring	1
G02	SR-E12	Snap Ring	1
H01	K-4410F	Key	1
H02	K-4410	Key	1
<b>OPTIONAL PART</b>			
<b>EXHAUST HOSE JOINT</b>			
274	G-170274-00	Exhaust Hose Joint	1

□ Ass'y No. denotes the assembled parts comprising of more than 1 pc. of parts. The related parts are shown in the thick frame.  
 □ #108, 209, 250 and 335 are supplied together with parts shown in ( ).

□ Specify parts number and quantity in ordering.  
 ■ Standard Accessory : F-112.....32mm Open-End Wrench : 1.